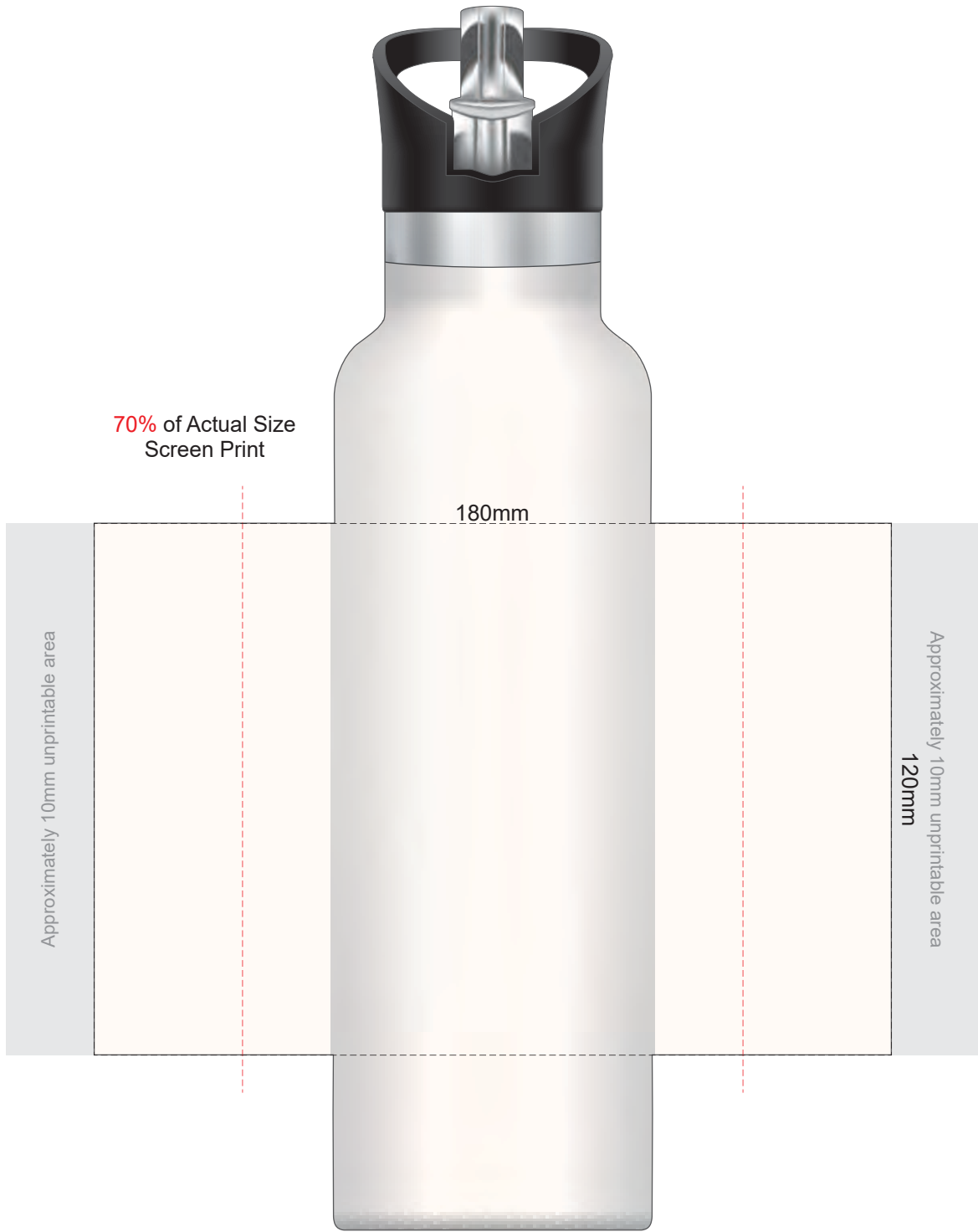


|              |
|--------------|
| Ecu          |
| Grey         |
| Yellow       |
| Mustard      |
| Orange       |
| Rust         |
| Pale Pink    |
| Pink         |
| Red          |
| Burgundy     |
| Sage         |
| Olive        |
| Bright Green |
| Dark Green   |
| Teal         |
| Light Blue   |
| Pale Blue    |
| Petrol Blue  |
| Royal Blue   |
| Navy         |
| Mauve        |
| Purple       |
|              |



70% of Actual Size  
Screen Print

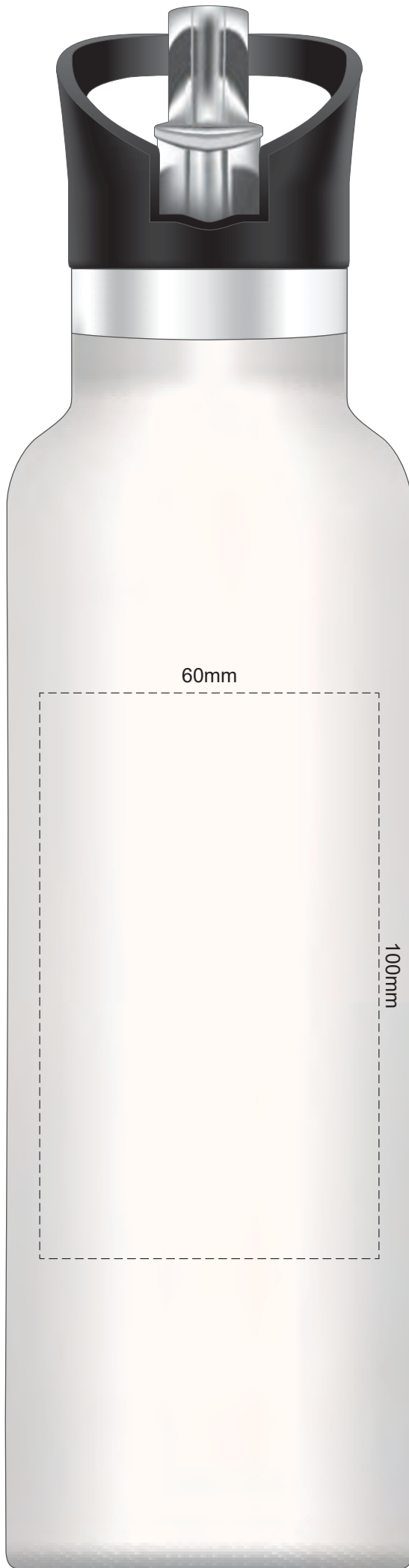
180mm

Approximately 10mm unprintable area

Approximately 10mm unprintable area  
120mm

Red Line = Exact opposites of the product  
(centre artwork to the red line)

100% of Actual Size  
Laser Engraving



- Ecu
- Grey
- Yellow
- Mustard
- Orange
- Rust
- Pale Pink
- Pink
- Red
- Burgundy
- Sage
- Olive
- Bright Green
- Dark Green
- Teal
- Light Blue
- Pale Blue
- Petrol Blue
- Royal Blue
- Navy
- Mauve
- Purple

Engraves to a  
Shiny Steel Finish

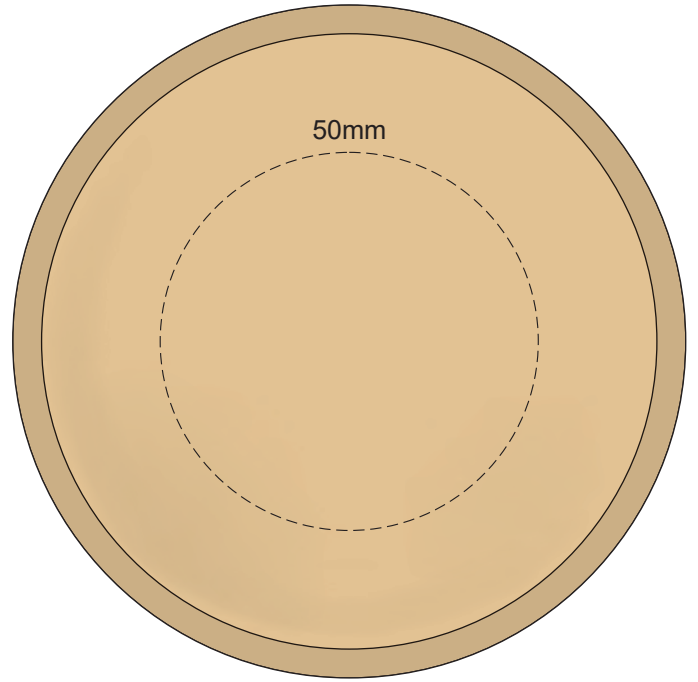
|              |
|--------------|
| Ecu          |
| Grey         |
| Yellow       |
| Mustard      |
| Orange       |
| Rust         |
| Pale Pink    |
| Pink         |
| Red          |
| Burgundy     |
| Sage         |
| Olive        |
| Bright Green |
| Dark Green   |
| Teal         |
| Light Blue   |
| Pale Blue    |
| Petrol Blue  |
| Royal Blue   |
| Navy         |
| Mauve        |
| Purple       |
| Black        |

70% of Actual Size  
 Rotary Digital  
 (Gloss Finish)

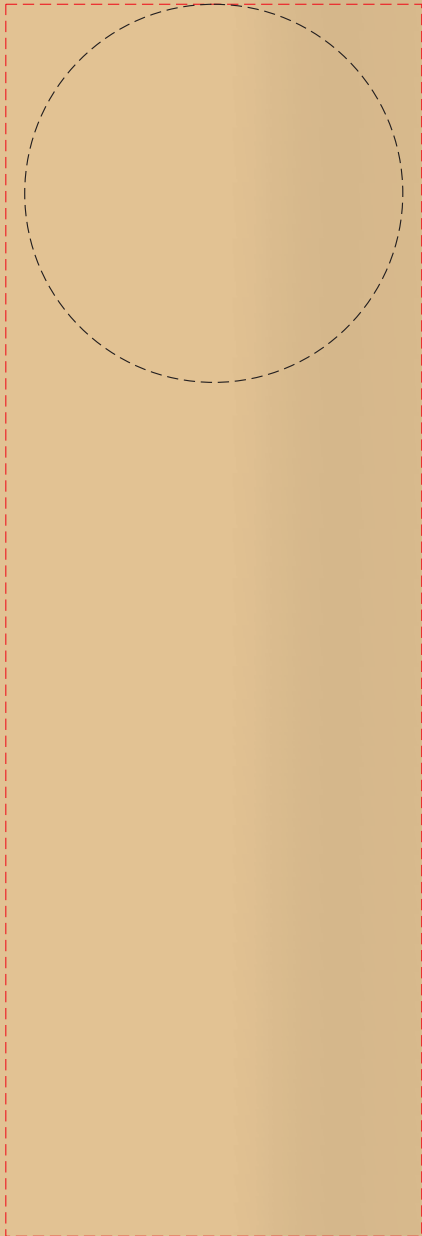


Red Line = Exact opposites of the product  
 (centre artwork to the red line)

100% of Actual Size  
Pad Print (one colour)

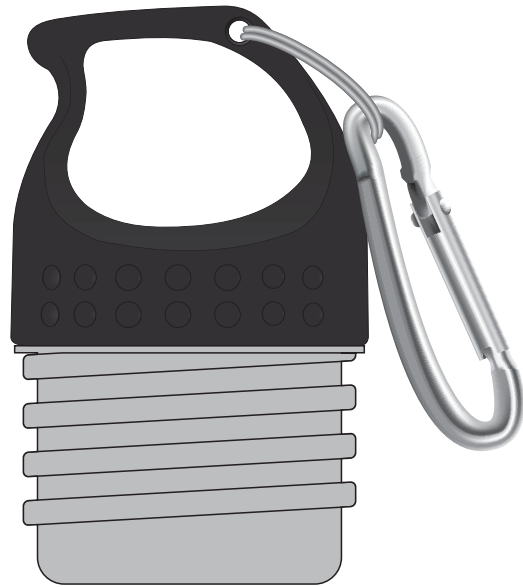


50mm

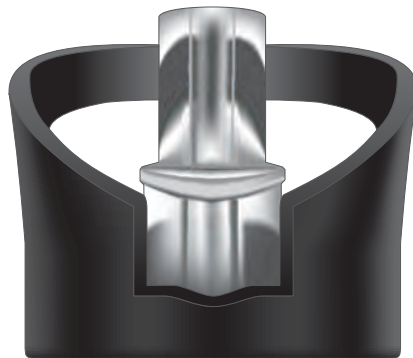


Branding area can be moved anywhere within the red line.

**CARABINER LID**



**FLIP VALVE LID**



**SIPPER LID**

